

Security Classification: Confidential

Type 4J53
MAGNETRON

GENERAL CHARACTERISTICS

Electrical

Filament or Cathode	Cathode
Voltage	16 volts
Current	3.1 amp
Frequency	2793 - 2813 Mc
Field Strength	2700 gauss
Peak Power Output	750 kilowatts

Mechanical

See Outline Drawing

Maximum Ratings (Peak values for duty cycle specified)

Duty Cycle	500
Anode voltage	30 kilovolts
Anode current	75 amps
Anode dissipation	500 watts

Sponsor: Raytheon Manufacturing Company - Power Tube Division

from RMA release # 456, Nov. 23, 1945

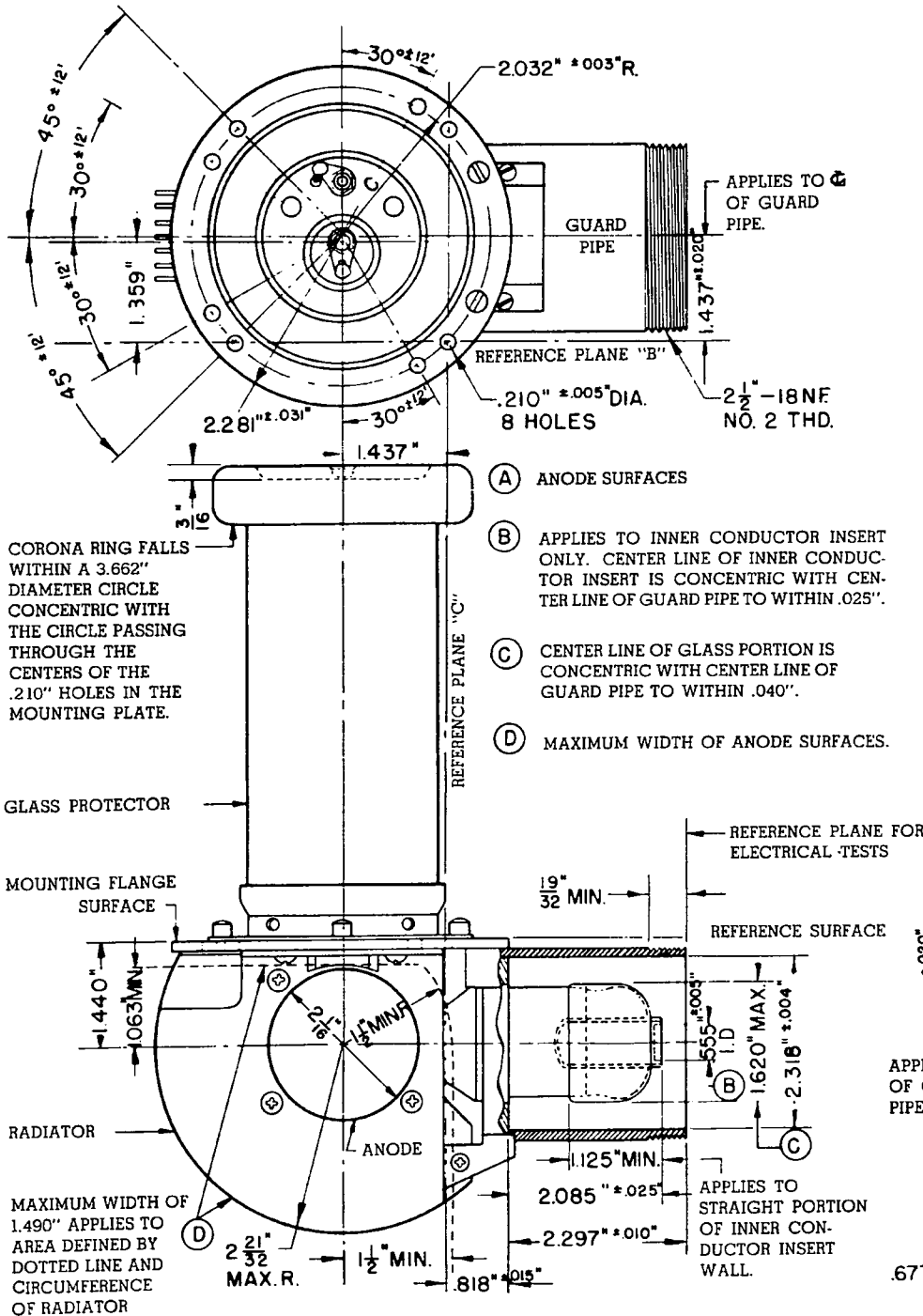
**TYPES 4J31-4J35
4J43-4J44
4J53**

RAYTHEON

**TYPES 4J31-4J35
4J43-4J44
4J53**

TECHNICAL INFORMATION MAGNETRON OSCILLATOR

OUTLINE DRAWING



COMMON HEATER-CATHODE CONNECTION INDICATED BY LETTER "C".

SOLDERED JOINTS IN THE MOUNTING FLANGE AND OUTPUT PIPE ARE VACUUM TIGHT TO PROVIDE A HERMETIC SEAL. ALL POINTS ON THE REFERENCE SURFACE ARE FLAT TO WITHIN .015" FOR 1/2" FROM OUTER EDGE.

LOCKING TYPE PIN JACKS ARE SPACED .797" ± .015" WITH RESPECT TO EACH OTHER AND ARE WITHIN A RADIUS OF .100" OF THE LOCATION SPECIFIED. PIN JACKS WILL FIT G. R. 274 BANANA PLUG AND ARE 1/2" LONG.

