

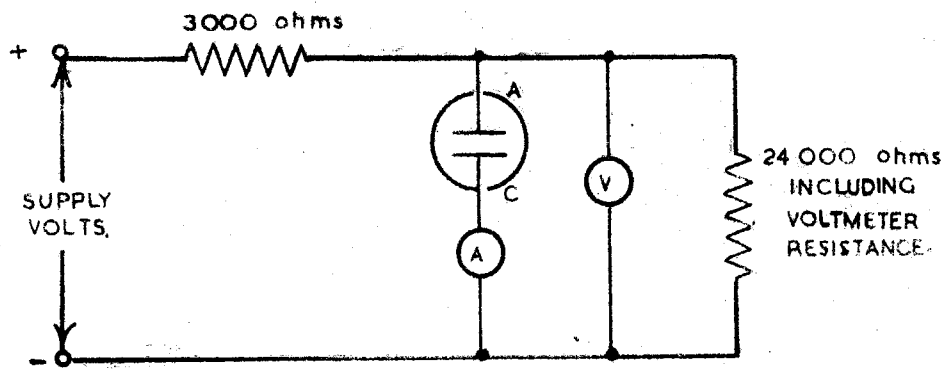
Specification :- D.C.D., N.T. 1439, Issue No. 1, Dated 11th December, 1943.	<u>VALVE SECURITY</u> Non-Secret.	To be read in conjunction with K1001.

<u>TYPE OF VALVE</u> :- Gas filled voltage stabiliser. <u>CATHODE</u> :- Cold <u>ENVELOPE</u> :- Glass - unmetallised.	<u>MARKING</u> VS110A 10E/423									
<u>RATING</u>  Maximum Striking Voltage: 180  This valve is a selected VS110 for special circuit requirements.	<u>BASE</u> British 4-pin. Pin   Electrode 1   Anode 2   Cathode 3   No connection 4   No connection									
	<u>DIMENSIONS</u> See K1001/A1/D1.									
	<table border="1"> <thead> <tr> <th>mm.</th> <th>Min.</th> <th>Max.</th> </tr> </thead> <tbody> <tr> <td>A</td> <td>117</td> <td>125</td> </tr> <tr> <td>B</td> <td>44</td> <td>52</td> </tr> </tbody> </table>	mm.	Min.	Max.	A	117	125	B	44	52
mm.	Min.	Max.								
A	117	125								
B	44	52								

TESTS

To be performed in addition to those applicable in K1001.

	Test Conditions	Test	Limits		No. Tested
			Min.	Max.	
	Tests shall be carried out in a circuit similar to that shown below.				
a	Increase the applied voltage until current flows.	Striking Voltage (V)	-	180	100%
b	Applied voltage varied from 235 V. to 155 V.	1. Stabilised voltage (V)	110	120	100%
		2. Variation in stabilised voltage (V)	-	6	100%
c	<u>Life Test.</u> A voltage of 195 v. shall be applied for 400 hours, after which time test 'b' shall be applied when the stabilised voltage must not exceed 125 V.				1%



→ Indicates a change.